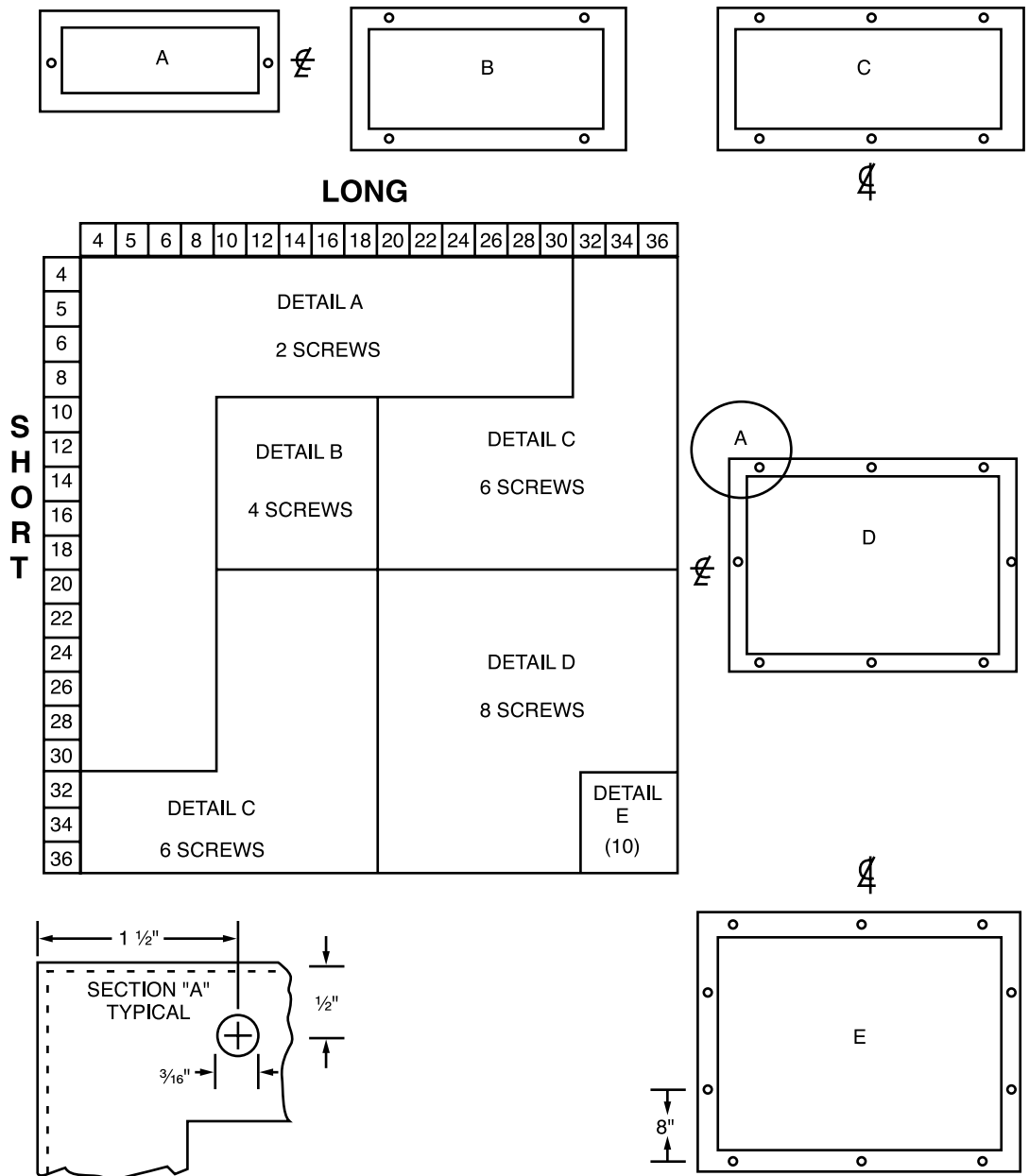


SCREW HOLE LOCATION CHART

For No.'s 356, 357, 372, 377, 190, 191, 192-L, RA204,
RA503, 380 Series, 360 Series, 173, 375, 358, 327 & 367



Overall size of above No.'s. is 1 1/2" over nominal.
Daylight size of above No.'s is 7/8" under nominal.