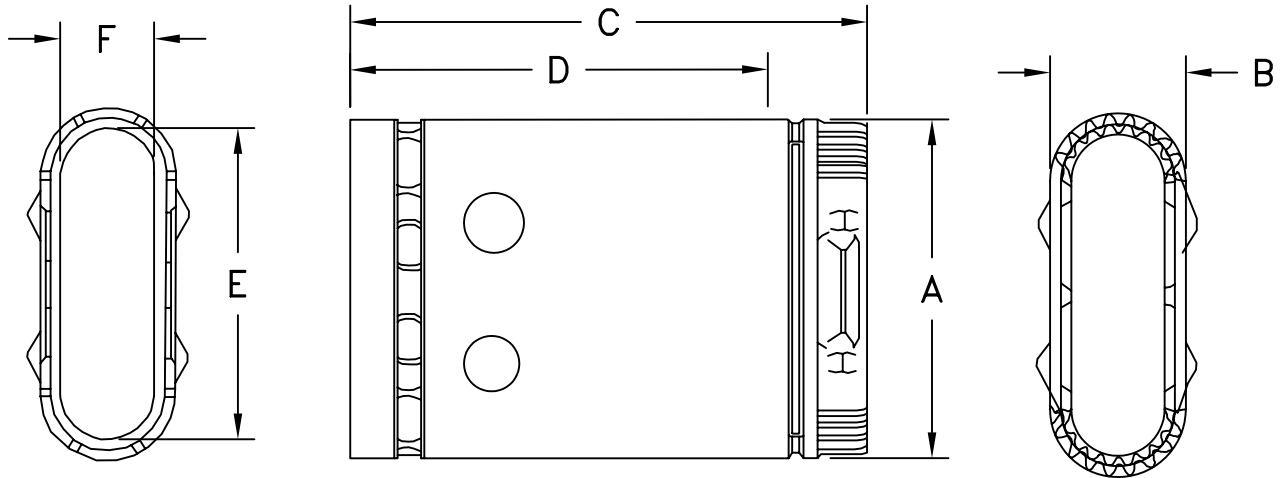


SUBMITTAL DRAWING	JOB NAME: _____	Type B Gas Vent PIPE SECTION SIZES 3" - 6"
	LOCATION: _____	
	ARCHITECT: _____	
DATE: 02/02/05	ENGINEER: _____	DRAWING #: B2-1
SUBMITTED BY: _____	CONTRACTOR: _____	



PART NO.	SIZE	WIDTH A	DEPTH B	HEIGHT C	ASSEMBLED LENGTH D	WIDTH E	DEPTH F
406	4"	7-1/16"	2-7/8"	6"	4-3/4"	6-1/2"	2-1/4"
4012	4"	7-1/16"	2-7/8"	12"	10-3/4"	6-1/2"	2-1/4"
4018	4"	7-1/16"	2-7/8"	18"	16-3/4"	6-1/2"	2-1/4"
4024	4"	7-1/16"	2-7/8"	24"	22-3/4"	6-1/2"	2-1/4"
403	4"	7-1/16"	2-7/8"	36"	34-3/4"	6-1/2"	2-1/4"
404	4"	7-1/16"	2-7/8"	48"	46-3/4"	6-1/2"	2-1/4"
405	4"	7-1/16"	2-7/8"	60"	58-3/4"	6-1/2"	2-1/4"
506	5"	10-3/4"	2-7/8"	6"	4-3/4"	9-3/4"	2-1/4"
5012	5"	10-3/4"	2-7/8"	12"	10-3/4"	9-3/4"	2-1/4"
5018	5"	10-3/4"	2-7/8"	18"	16-3/4"	9-3/4"	2-1/4"
5024	5"	10-3/4"	2-7/8"	24"	22-3/4"	9-3/4"	2-1/4"
503	5"	10-3/4"	2-7/8"	36"	34-3/4"	9-3/4"	2-1/4"
504	5"	10-3/4"	2-7/8"	48"	46-3/4"	9-3/4"	2-1/4"
505	5"	10-3/4"	2-7/8"	60"	58-3/4"	9-3/4"	2-1/4"
606	6"	11-1/2"	3-1/4"	6"	4-3/4"	10-7/8"	2-5/8"
6012	6"	11-1/2"	3-1/4"	12"	10-3/4"	10-7/8"	2-5/8"
6018	6"	11-1/2"	3-1/4"	18"	16-3/4"	10-7/8"	2-5/8"
6024	6"	11-1/2"	3-1/4"	24"	22-3/4"	10-7/8"	2-5/8"
603	6"	11-1/2"	3-1/4"	36"	34-3/4"	10-7/8"	2-5/8"

• **MATERIAL:**
 OUTER - MIN., .018 THICK, GALVANIZED STEEL
 INNER - MIN., .012 THICK, ALUMINUM ALLOY