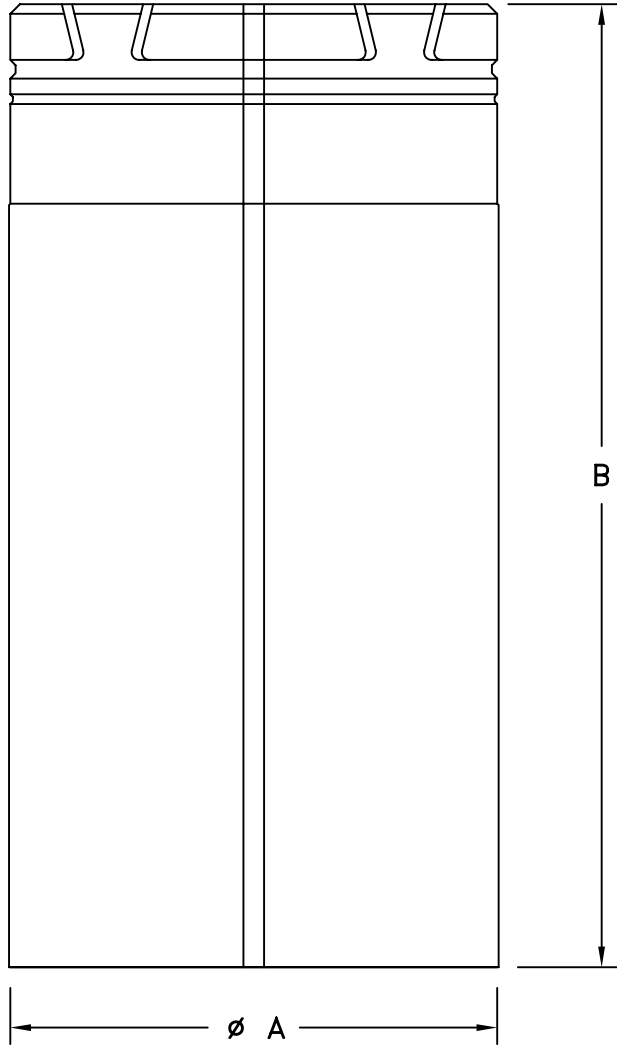


| | | |
|--------------------------|--|--|
| SUBMITTAL DRAWING | JOB NAME: _____ LOCATION: _____ ARCHITECT: _____ ENGINEER: _____ CONTRACTOR: _____ | Amerivent Direct Vent ADJUSTABLE LENGTH PIPE EXTENSION 4" & 5" DIAMETERS |
| DATE: 05/03/05 | | DRAWING #: B7-4 |
| SUBMITTED BY: _____ | | |



NOTE:

1. TO ORDER PAINTED BLACK FINISH, ADD 'B' TO THE END OF THE PRODUCT ORDER NUMBER.

| PART NO. | SIZE | ϕA | LENGTH B | ADJUSTS | |
|----------|-----------|----------|-------------|---------|-----|
| | | | | FROM | TO |
| 4D7A | 4"X6-5/8" | 6-11/16" | 7" | 3" | 5" |
| 4D12A | 4"X6-5/8" | 6-11/16" | 12" | 3" | 10" |
| 4D16A | 4"X6-5/8" | 6-11/16" | 16" | 3" | 14" |
| 4D26A | 4"X6-5/8" | 6-11/16" | 26" | 3" | 24" |
| 5D7A | 5"X8" | 8-1/8" | 7" | 3" | 5" |
| 5D12A | 5"X8" | 8-1/8" | 12" | 3" | 10" |
| 5D16A | 5"X8" | 8-1/8" | 16" | 3" | 14" |
| 5D26A | 5"X8" | 8-1/8" | 26" | 3" | 24" |



- MATERIAL
- OUTER PIPE – MIN., .018 THICK, GALVANIZED STEEL
- INNER PIPE – MIN., .012 THICK, TYPE 430 STAINLESS STEEL