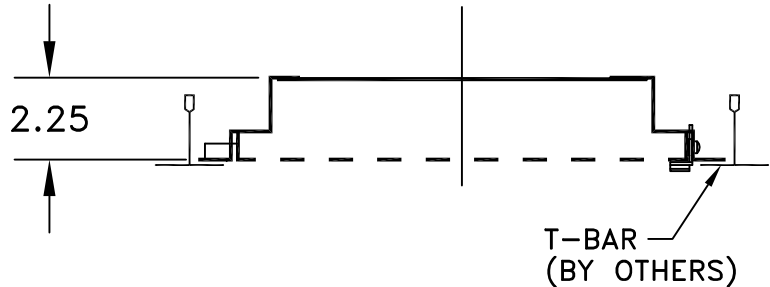
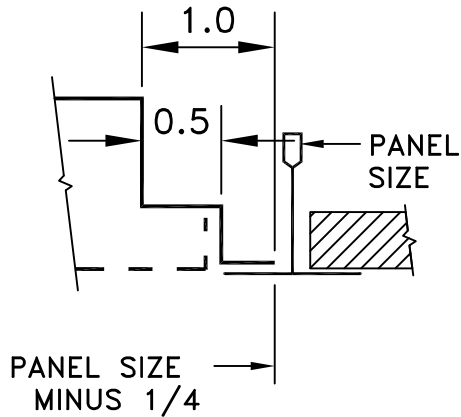


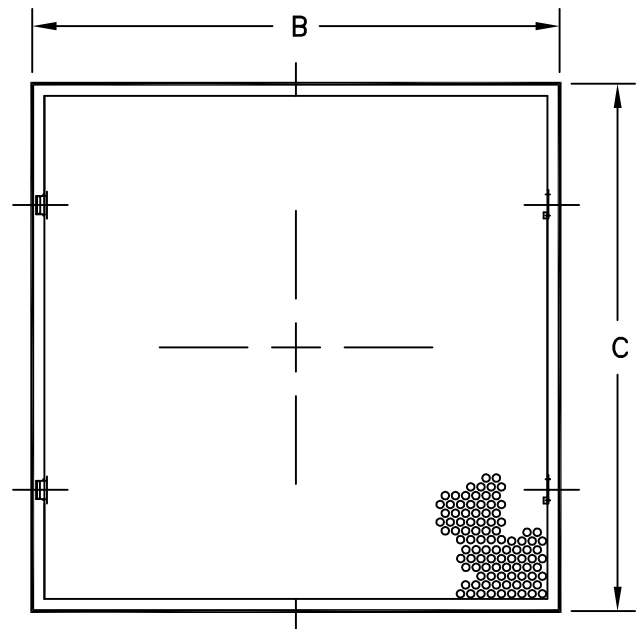
# MODEL 1276

## REMOVABLE FACE PERFORATED T-BAR RETURN

STANDARD INDUSTRY TOLERANCES APPLY. SPECIFICATIONS SUBJECT TO CHANGE WITHOUT NOTICE.



LISTED SIZE	PANEL SIZE	B DIM	C DIM
2210	24x12	11-3/4	23-3/4
2222	24x24	23-3/4	23-3/4
2246	24x48	23-3/4	47-3/4



Model 1276 perforated ceiling return is designed for use in surface mount lay in T-bar ceilings. The removable hinged face provides easy access for cleaning and /or maintenance. Steel construction. Standard finish is white.

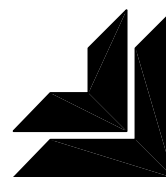
PROJECT: \_\_\_\_\_

ARCHITECT: \_\_\_\_\_

ENGINEER: \_\_\_\_\_

CONTRACTOR: \_\_\_\_\_

LOCATION: \_\_\_\_\_



**J&J REGISTER**  
AIR DISTRIBUTION PRODUCTS